

25th Floor Plug & Play View Space

HIGH-END SUBLEASE 3,800 RSF

East Cut District San Francisco

595 Market St

East Cut District, San Francisco

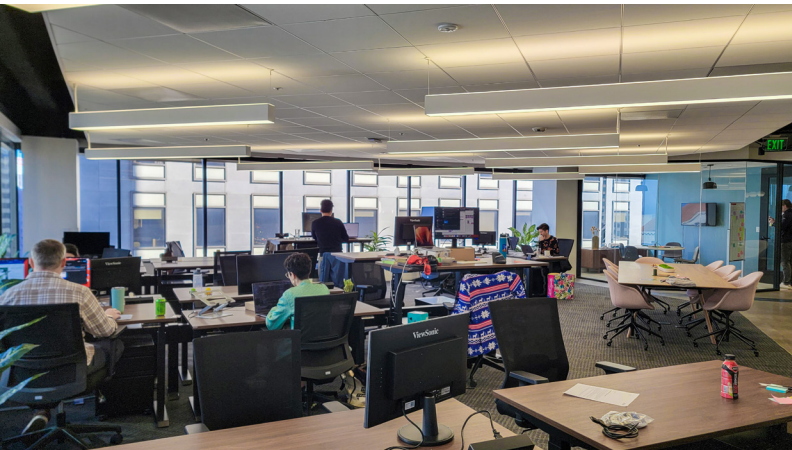


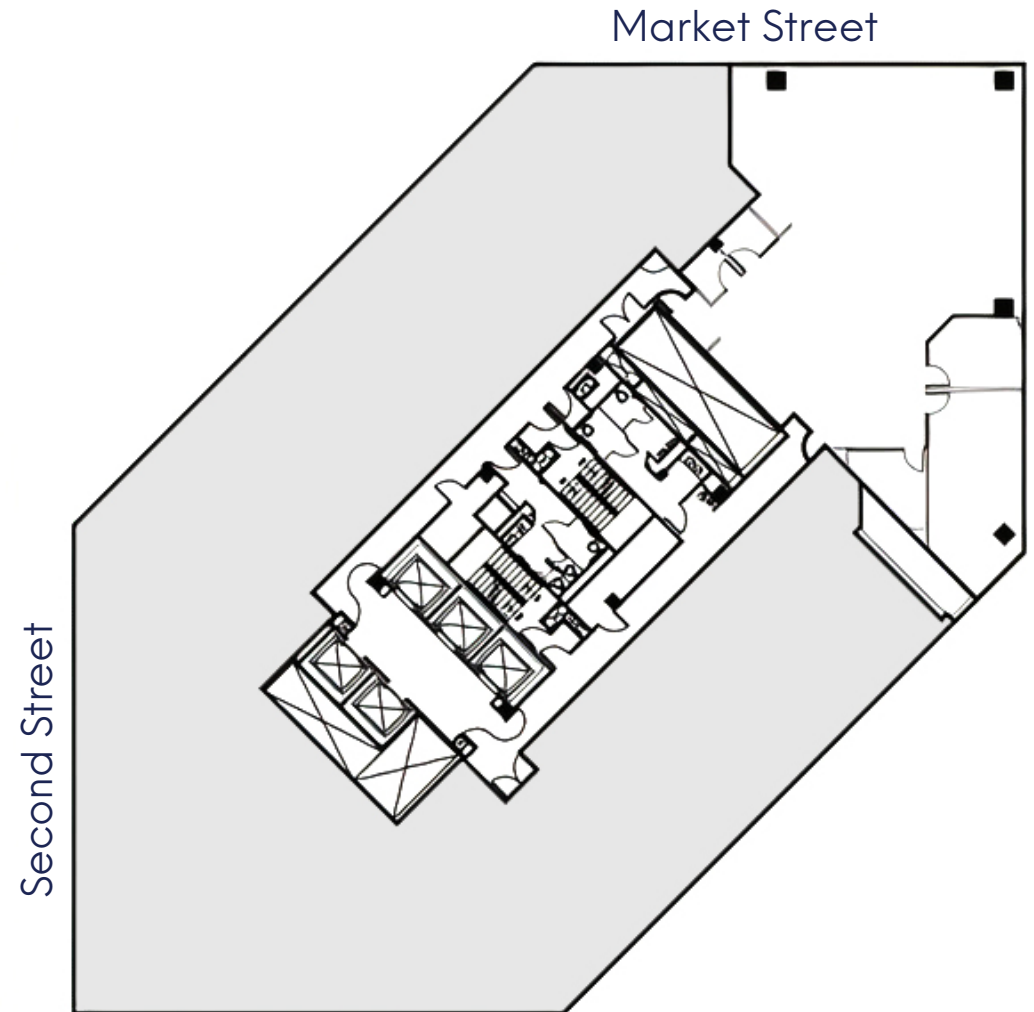
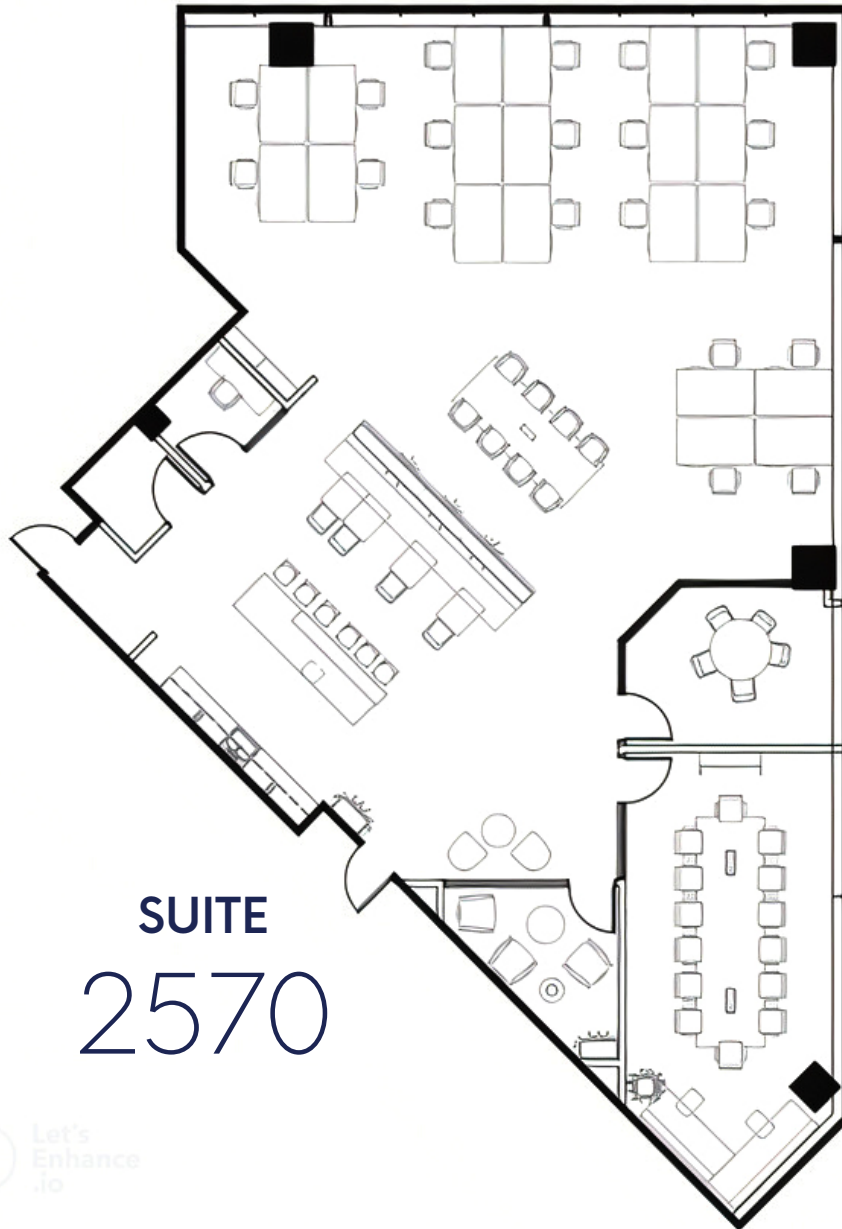
595

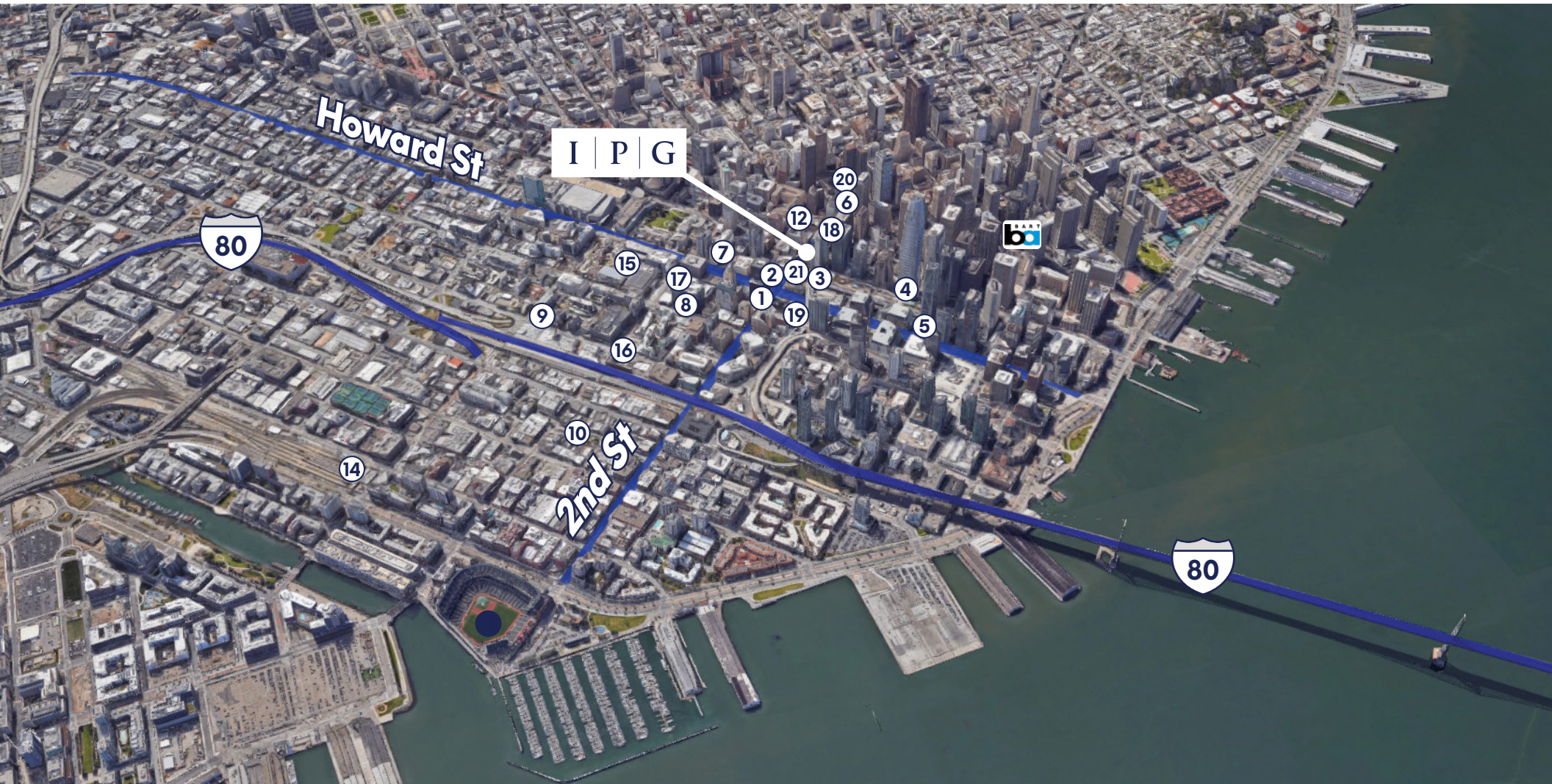


Property highlights:

- Fully Furnished Private Suite
- Creative Finishes, Exposed Ceilings, Polished Concrete
- 4 Meeting Rooms
- Open Plan With 20 Sit/Stand Workstations
- Open Pantry With Banquette Seating
- Excellent Window Line And Natural Light
- Access To STUDIO Amenities







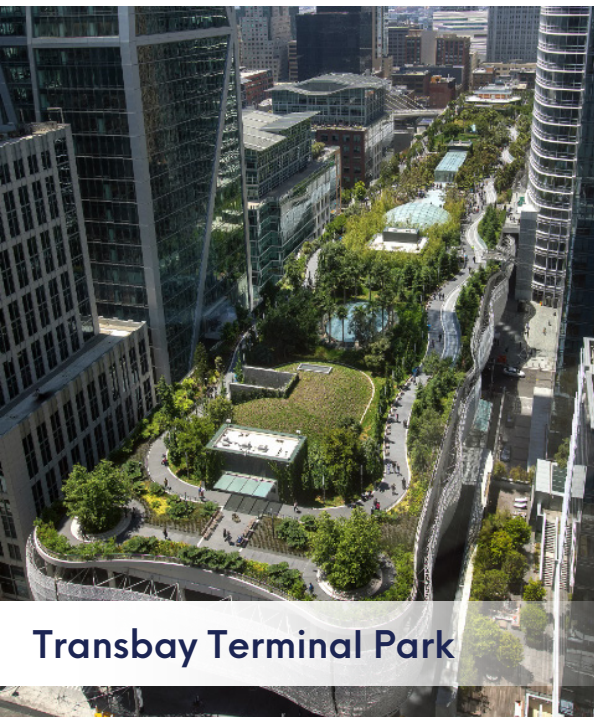
- | | | | | | | |
|--------------------------|--------------------|-----------------------|-------------------|-------------------|---------------|---------------------------|
| 1 LinkedIn | 4 Salesforce Tower | 7 SFMoMA | 10 South Park | 13 Mascone Center | 16 Sweetgreen | 19 Southside Spirit House |
| 2 Blue Bottle Coffee | 5 Facebook | 8 Riverbed Technology | 11 Oracle Park | 14 Caltrain | 17 Fitness SF | 20 Uno Dos Tacos |
| 3 Transbay Terminal Park | 6 BART | 9 Whole Foods | 12 Crunch Fitness | 15 Ferry Building | 18 Sammy's | 21 Pie Punks |



Blue Bottle Caffee



Sweetgreen Restaurant



Transbay Terminal Park



Southside Spirit House



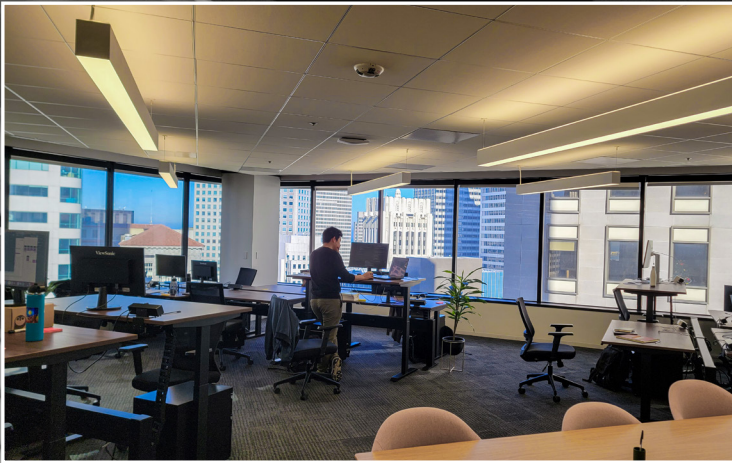
Uno Dos Tacos



INNOVATION
PROPERTIES
GROUP

595 Market St

East Cut District, San Francisco



For leasing information

Chris Baker | Vice President

(650) 315-9858 | chris@ipgsf.com

DRE 2116566

Charlie Cutler | Vice President

(415) 850-4935 | charlie@ipgsf.com

DRE 02026787

Innovation Properties Group

181 2nd Street, San Francisco, CA

www.ipgsf.com | CL 02031924

ipgsf.com

This document has been prepared by IPG for advertising and general information only. IPG makes no guarantees, representations or warranties of any kind, expressed or implied, regarding the information including, but not limited to, warranties of content, accuracy and reliability. Any interested party should undertake their own inquiries as to the accuracy of the information. IPG excludes unequivocally all inferred or implied terms, conditions and warranties arising out of this document and excludes all liability for loss and damages arising there from. This publication is the copyrighted