

## State Of The Art R&D Campus

ROBUST HVAC & HEAVY POWER

Turnkey Options Or Landlord Build To Suit 1,000sf - 50,000sf

Expansion Potential Onsite To 200,000sf

1933 Davis St.

San Leandro CA



## Property Highlights:

### • Science-Focused Campus Ideal For

- Climate Tech, Life Sciences, EV, Ag-Tech, Lab, Biotech, AI, Health Tech, Robotics, Cleantech, Chemistry, Medical Device, Food Science, Drone Tech, VR
- Robust HVAC System
- Heavy Power

### • Flexible Opportunity

- Landlord Will Build To Tenants Spec Requirements

## OR

- Can be 100% Plug & Play (Immediate Move-In Potential)

### • Fully Amenitized Campus

- Abundant Car Parking Onsite
- Electric Chargers
- Bike Parking
- Locker Rooms With Showers

- Onsite Brewery, Cafe, Foodtrucks
- Full ADA (Passenger Elevator & Freight Elevator)

### • Pleasant Working Environment

- Unobstructed Bay Views
- High Ceilings Throughout
- Common Lounge With Complimentary Coffee/Snacks

### • Loading

- Oversized Rollup Doors
- Loading Docks
- Mass Industrial Scale Freight Elevator

### • Highly Pet Friendly

- Dedicated Pet Storage For Toys, Leashes, Treats

### • Mission Driven Project & Ownership

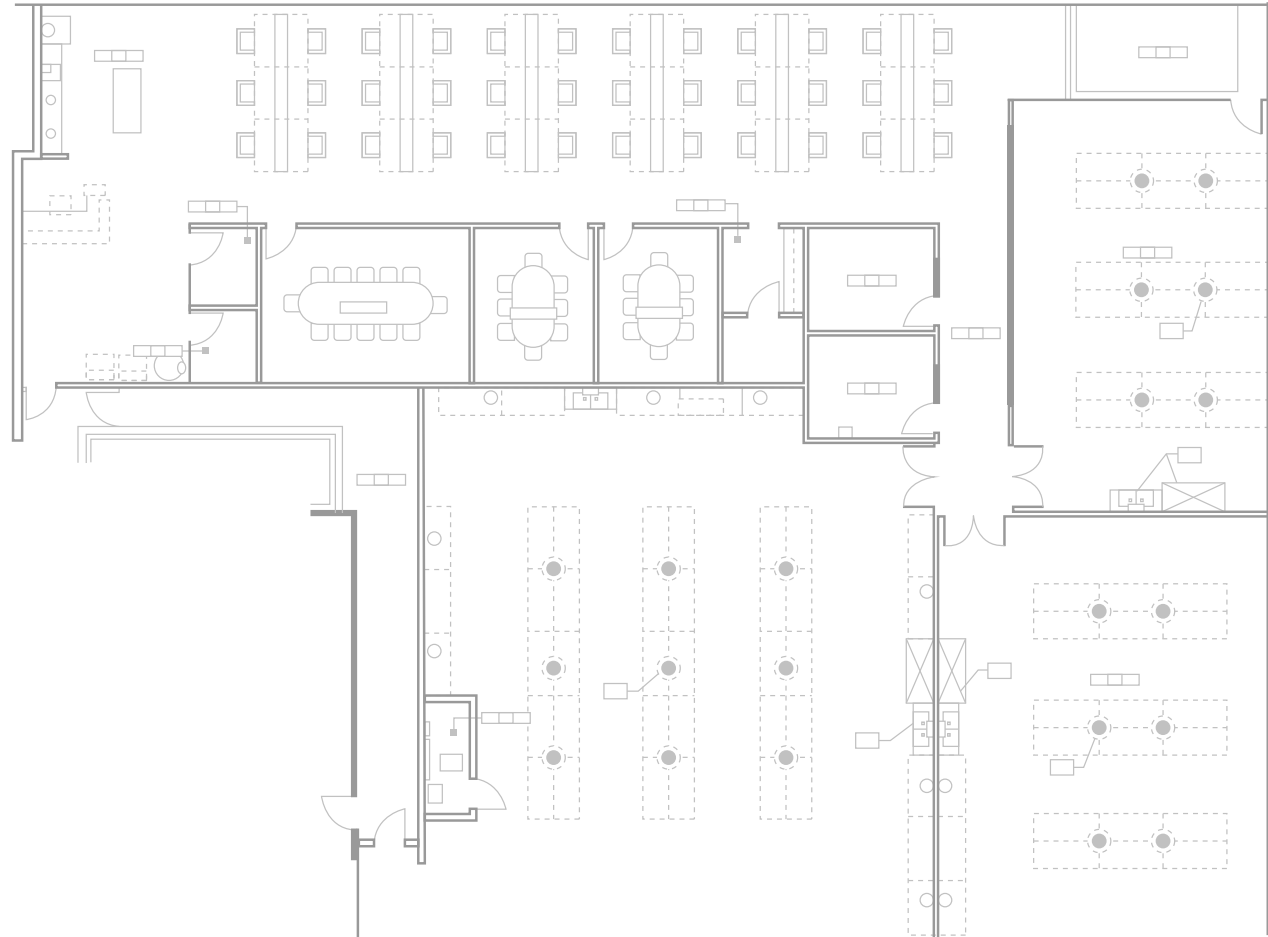
- Onsite Recycling Program
- Green Friendly Construction
- Low Emissions Mechanical Systems
- EV Chargers
- Job Creation For Local Community



**14,712 RSF**

### Space features:

- **Three (3) separate lab rooms, each with:**
  - Fume hood
  - Stainless steel lab sink
  - Safety shower
  - Dedicated HVAC
  - Power drops throughout
- **Open office:**
  - Soaring 20' ceilings
  - Full kitchen & break area
  - Seven (7) meeting rooms

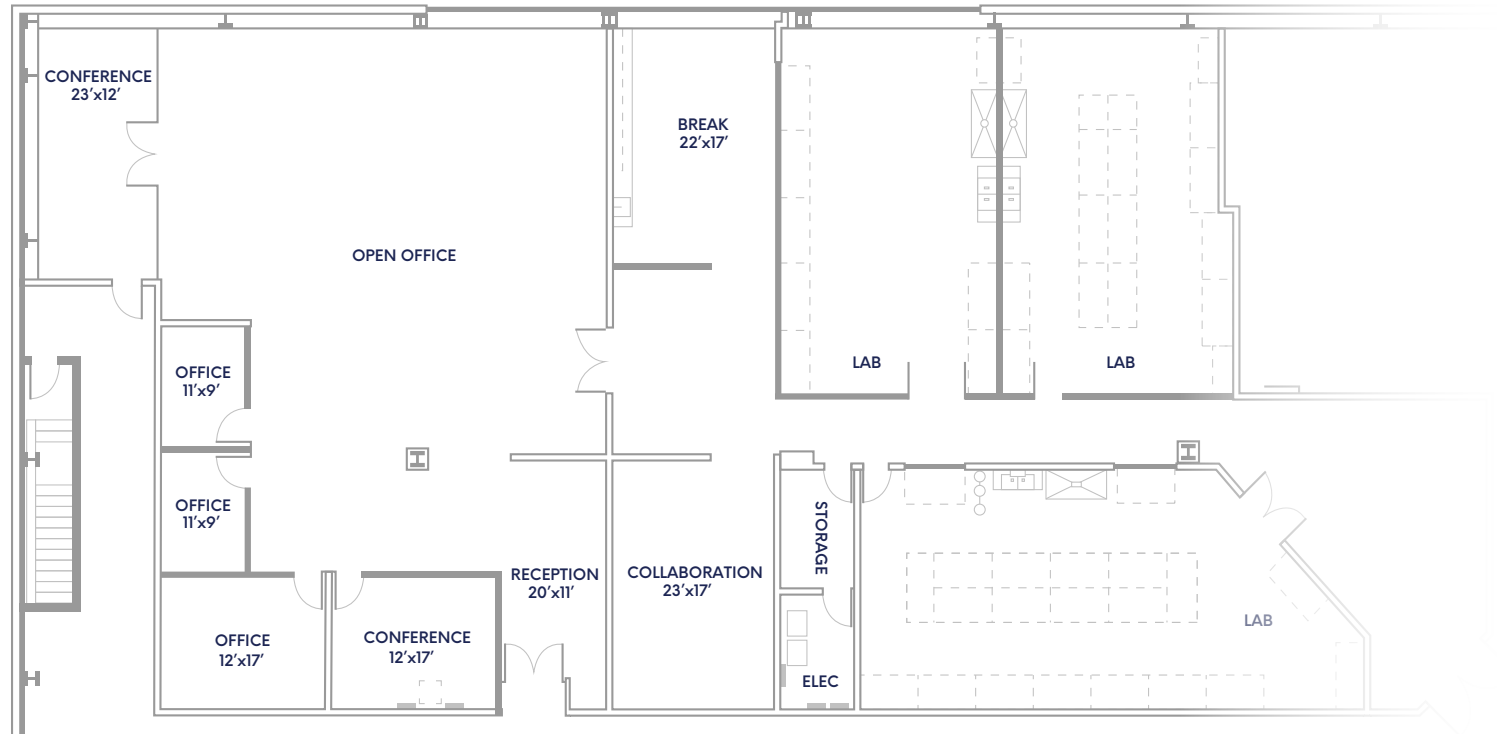




**10,506 RSF**

### Space features:

- **Three (3) separate lab rooms, each with:**
  - Fume hood
  - Stainless steel lab sink
  - Safety shower
  - Dedicated HVAC
  - Power drops throughout
- **Open office:**
  - Soaring 20' ceilings
  - Full kitchen & break area
  - Five (5) meeting rooms
  - Storage

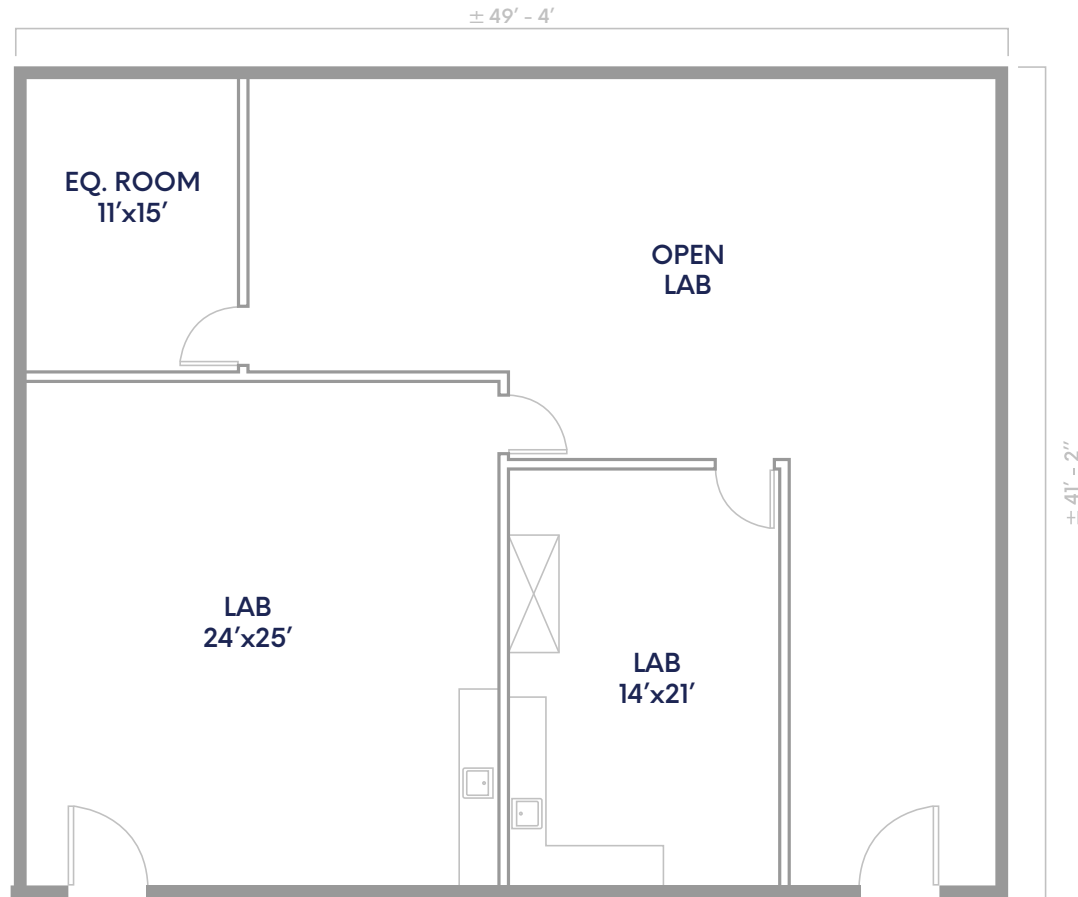




**2,855 RSF**

**Space features:**

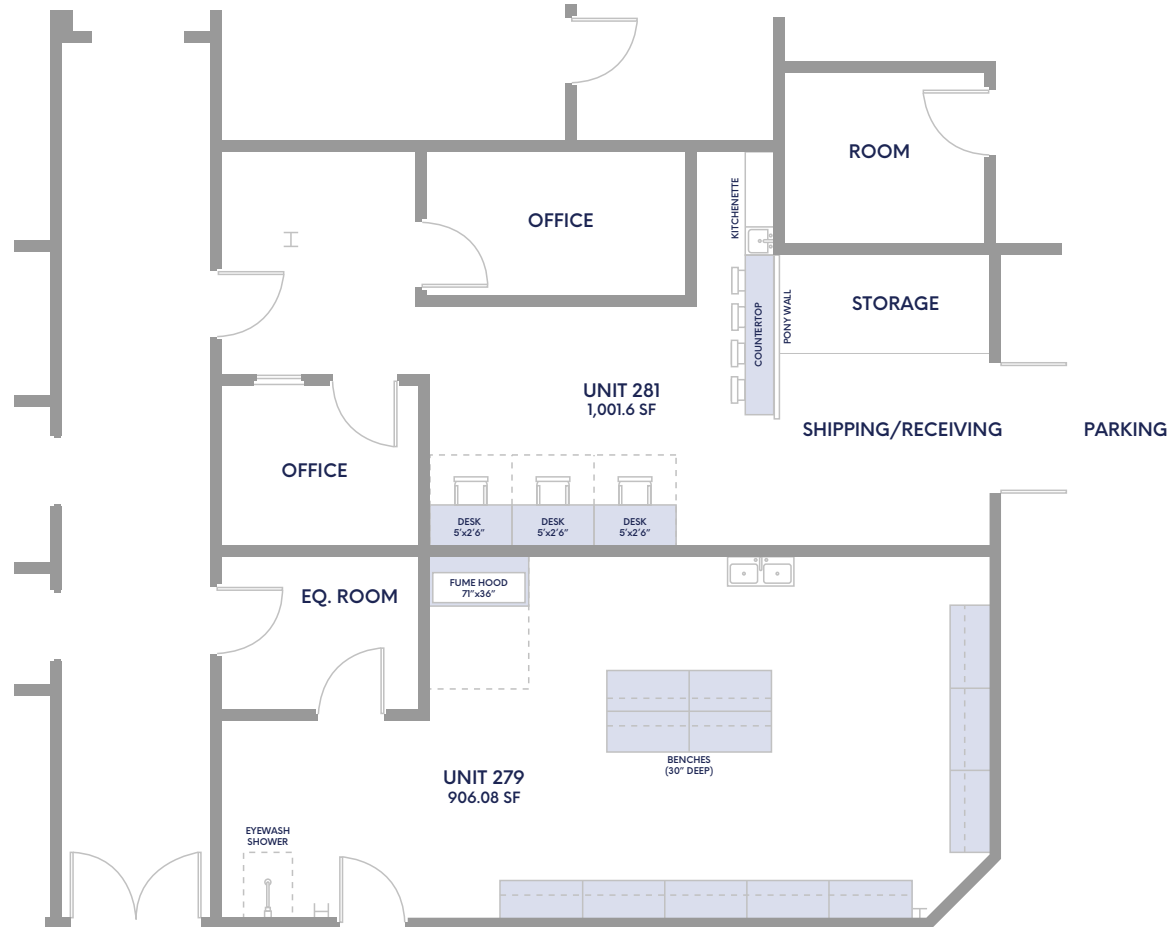
- Fume hood
- Stainless steel lab sink
- Safety shower
- Dedicated HVAC
- Equipment room



**2,579 RSF**

**Space features:**

- Fume hood
- Stainless steel lab sink
- Safety shower
- Lab Benches
- Dedicated HVAC
- Equipment room
- Three offices
- Shipping/Receiving area

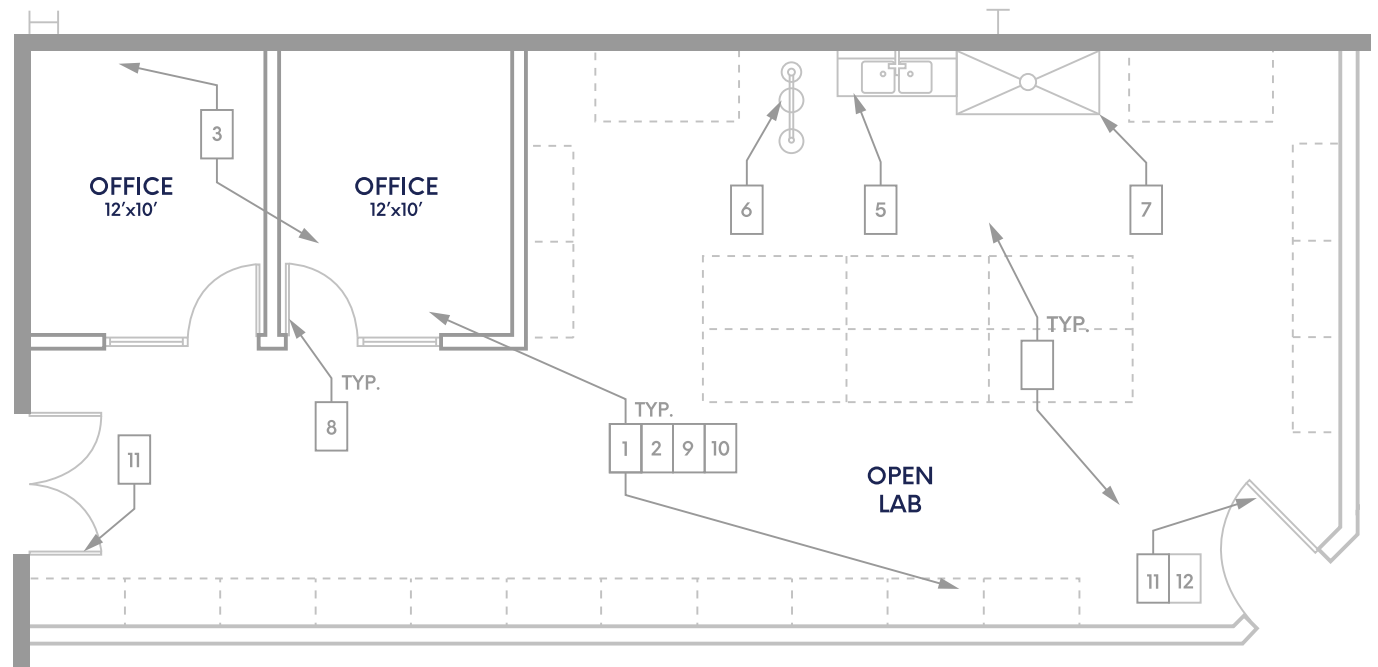




**1,485 RSF**

### Space features:

- Fume hood
- Stainless steel lab sink
- Safety shower
- Dedicated HVAC
- Two offices



**5,308 + 3,206 + 4,491 RSF**

Suite: 310 + 310B + 312





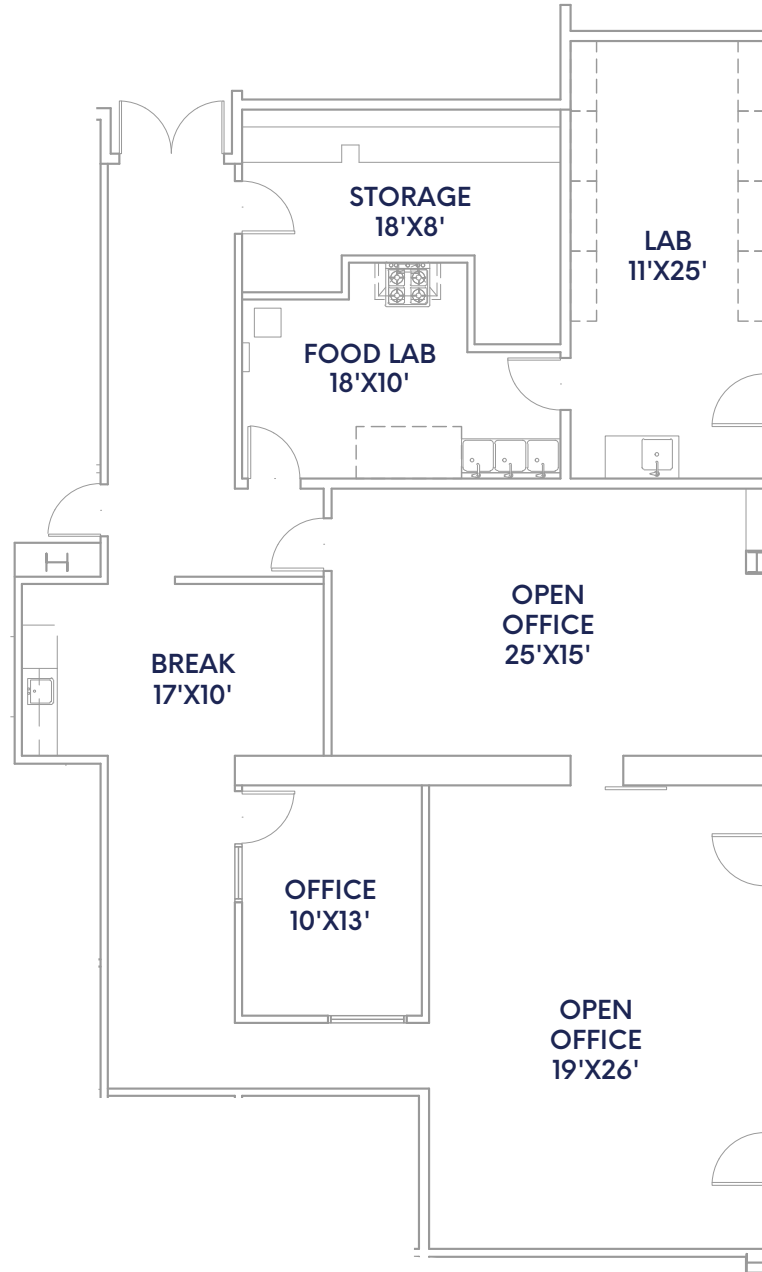
**5,308 + 4,491 RSF**

Suite: 310 + 312



**3,206 RSF**

Suite: 310B

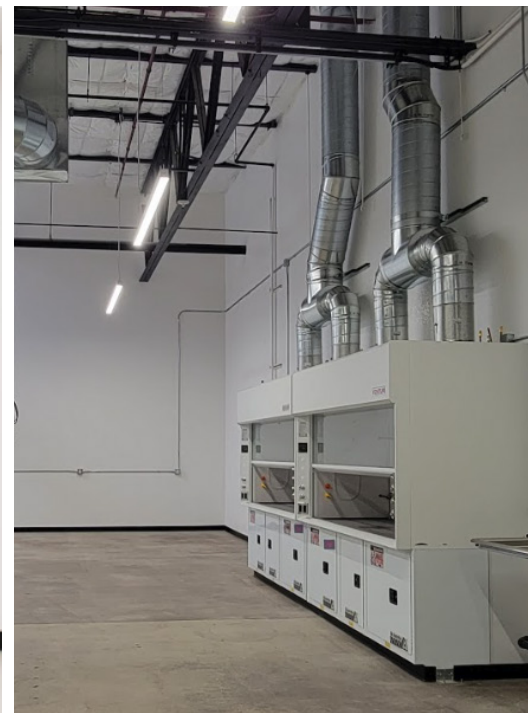




## Scientific Features Onsite

### Equipment & Specs

- 6ft Chemical fume hoods
- 8ft Chemical fume hoods
- Drop-ceiling lab rooms
- Lab sinks
- Safety showers
- Electrical Dropdowns
- Emergency Power
- Compressed Air
- Gigabit Fiber Internet



## 1933 Davis Campus Success Stories, A Proven Track Record



## Onsite Expansion Stories





## Many Commute Options









## Town Center

Town Center is a vibrant, multi-functional amenity space for collaboration and creative minds to meet and mingle. It's an amenity available to all tenants and visitors.

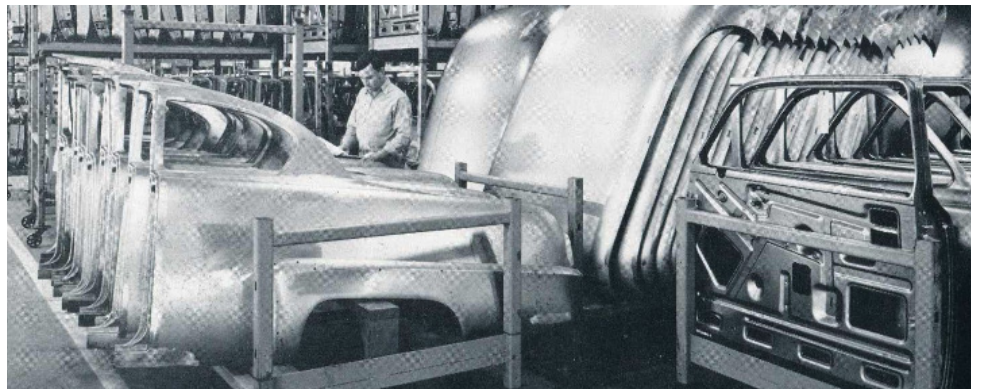
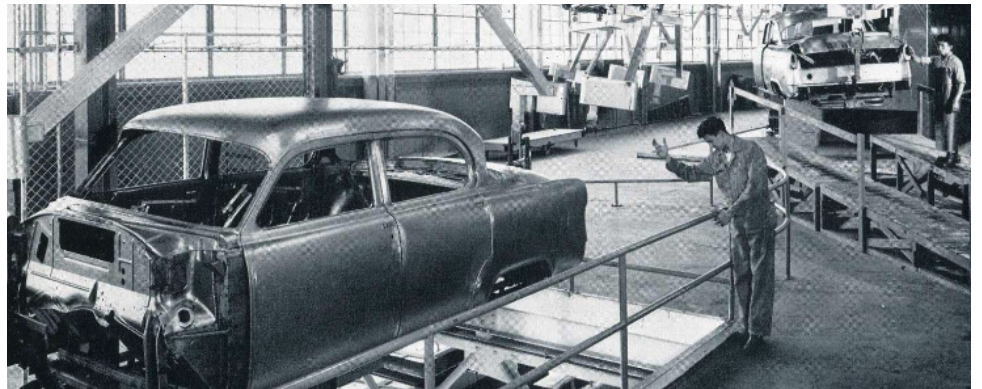
- Event and performance space
- Cafe area with complimentary fresh brewed coffee all day
- Lounge and varied seating areas
- Places to gather, work and connect
- Meet-ups and tenant events





## Where History Meets Innovation

Originally built to be Plymouth automobiles west coast manufacturing plant, 1933 Davis has a history rich in industrial innovation. Beginning in 2014, 1933 Davis has united members in an innovative hub for science, tech, and collaboration across many sectors. Providing entrepreneurs, makers, creators and visionaries the tools to collaborate, invent, work and manufacture.





## For leasing information

**Chris Baker | First Vice President**  
(650) 315-9858 | [chris@ipgsf.com](mailto:chris@ipgsf.com)  
BRE 02116566

**Charlie Cutler | Senior Vice President**  
(415) 850-4935 | [charlie@ipgsf.com](mailto:charlie@ipgsf.com)  
BRE : 02026787

**Taylor Stein | Vice President**  
(415) 518-8550 | [taylor@ipgsf.com](mailto:taylor@ipgsf.com)  
BRE 02059122

**Ivan Smiljanic | Partner**  
(510) 717-5008 | [ivan@ipgsf.com](mailto:ivan@ipgsf.com)  
BRE : 01995999

**Innovation Properties Group**  
181 2nd Street, San Francisco, CA  
[www.ipgsf.com](http://www.ipgsf.com) | CL 02031924

[ipgsf.com](http://ipgsf.com)

This document has been prepared by IPG for advertising and general information only. IPG makes no guarantees, representations or warranties of any kind, expressed or implied, regarding the information including, but not limited to, warranties of content, accuracy and reliability. Any interested party should undertake their own inquiries as to the accuracy of the information. IPG excludes unequivocally all inferred or implied terms, condition and warranties arising out of this document and excludes all liability for loss and damages arising there from. This publication is the copyrighted property of IPG and/or its licensor(s). ©2023. All rights reserved.