



INNOVATION  
PROPERTIES  
GROUP

# 576 Folsom St

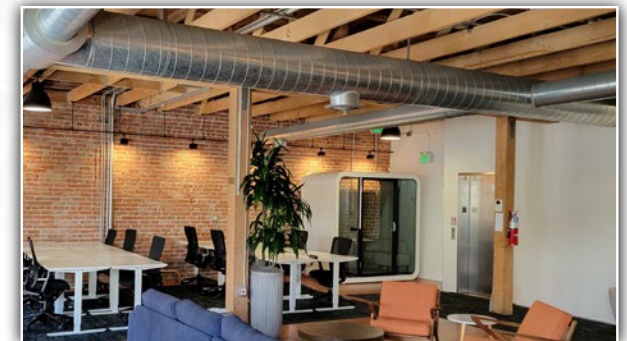
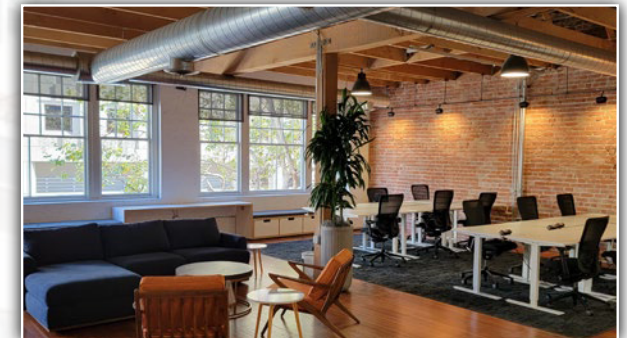
San Francisco East Cut

## Exposed Brick HQ & Event Space

Outdoor Patio, On-site Gym, Full Kitchen

**8,978sf Demisable By Floor To 3,280sf**

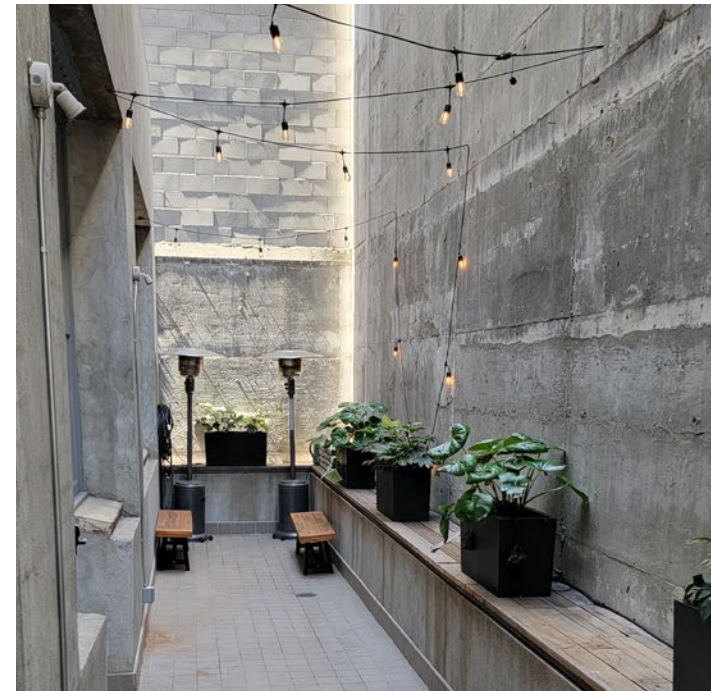
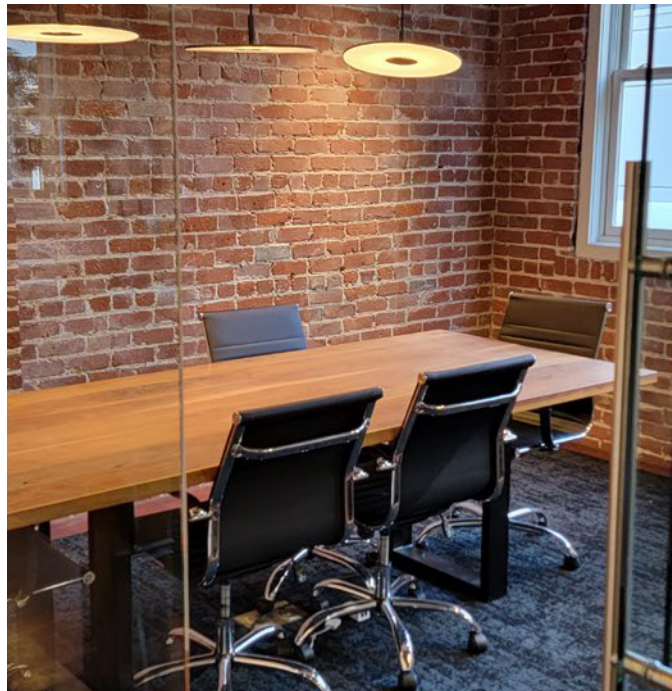
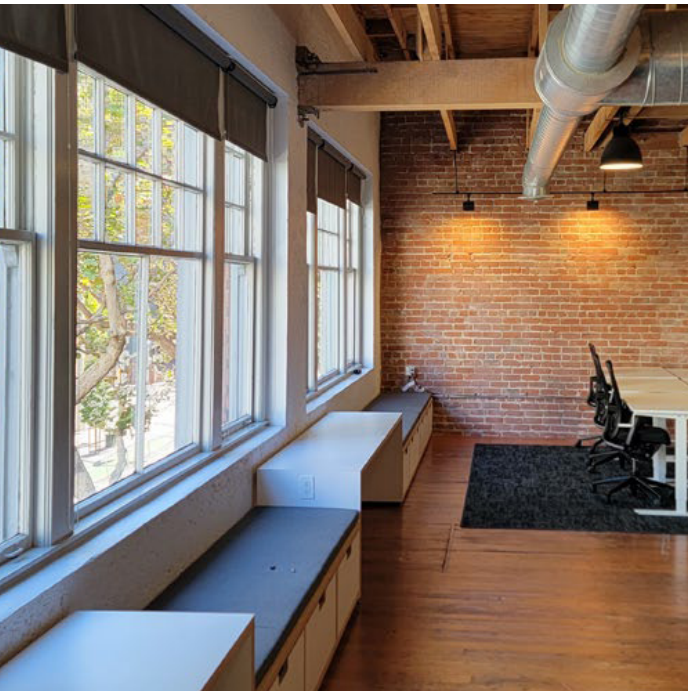
PLUG & PLAY LEX 8/24 OR LONGER DIRECT



[ipgsf.com](http://ipgsf.com)

## Property Highlights:

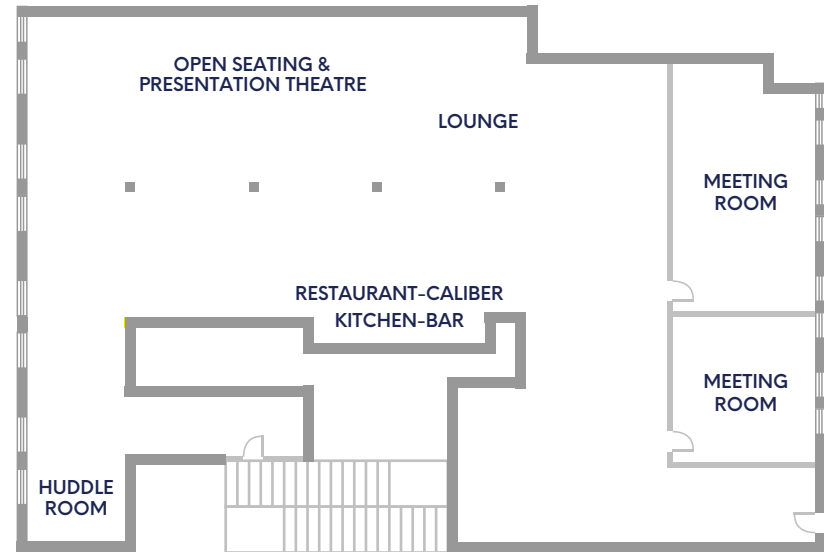
- 100% Plug & Play
- Polished Brick & Timber
- Full Kitchen With Hosting Lounge
- Ideal For Events
- DJ Booth & Dance Area
- Private Outdoor Space
- Onsite Gym
- Showers
- Bike Parking
- Full HVAC



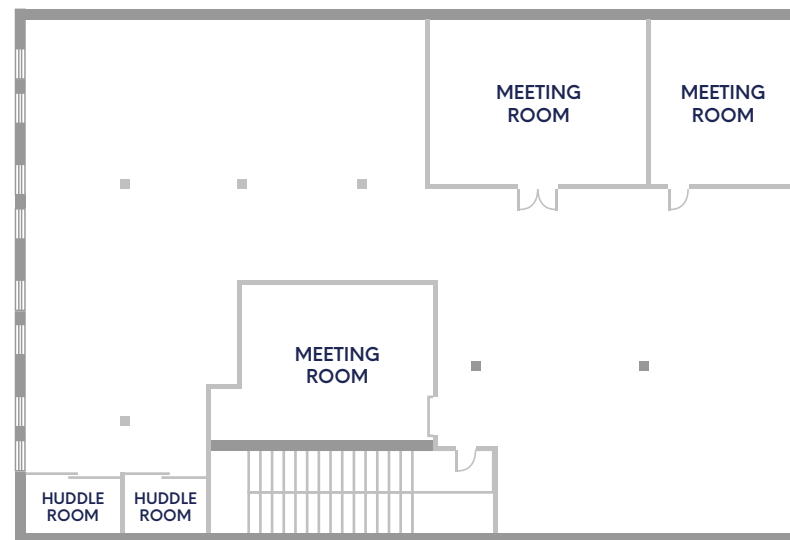
Floor 1

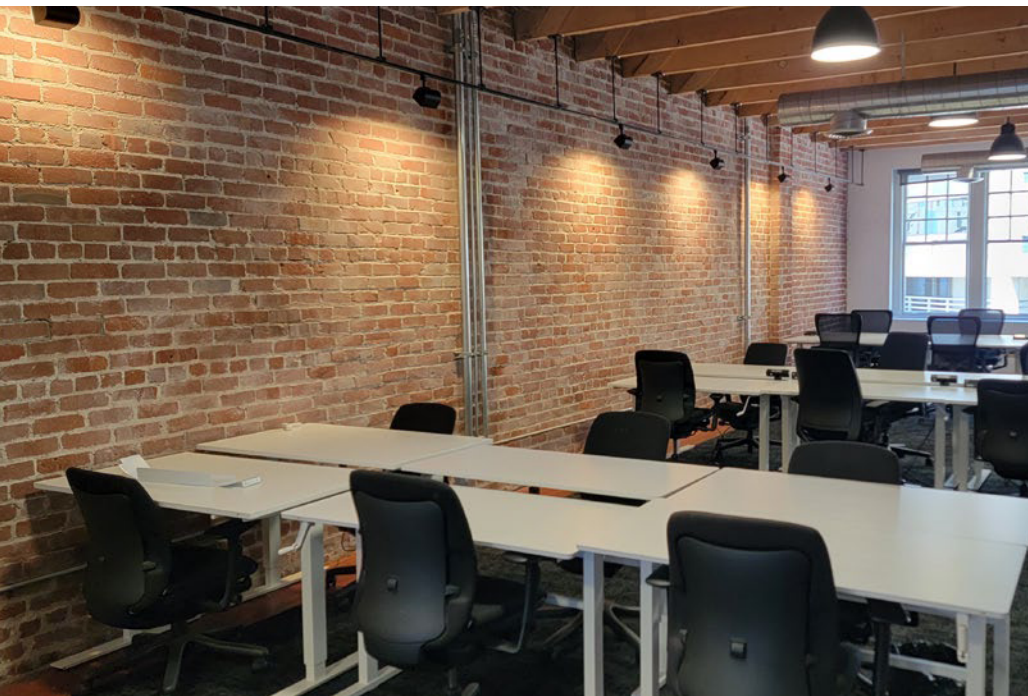


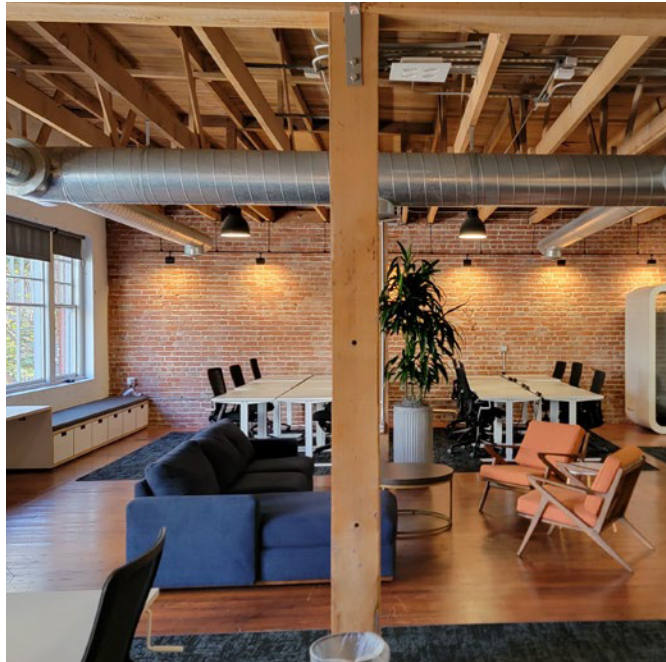
Floor 2



Floor 3









- |                          |                    |                       |                   |                   |               |                           |
|--------------------------|--------------------|-----------------------|-------------------|-------------------|---------------|---------------------------|
| 1 LinkedIn               | 4 Salesforce Tower | 7 SFMoMA              | 10 South Park     | 13 Mascone Center | 16 Sweetgreen | 19 Southside Spirit House |
| 2 Blue Bottle Coffee     | 5 Facebook         | 8 Riverbed Technology | 11 Oracle Park    | 14 Caltrain       | 17 Fitness SF | 20 Uno Dos Tacos          |
| 3 Transbay Terminal Park | 6 BART             | 9 Whole Foods         | 12 Crunch Fitness | 15 Ferry Building | 18 Sammy's    | 21 Pie Punks              |

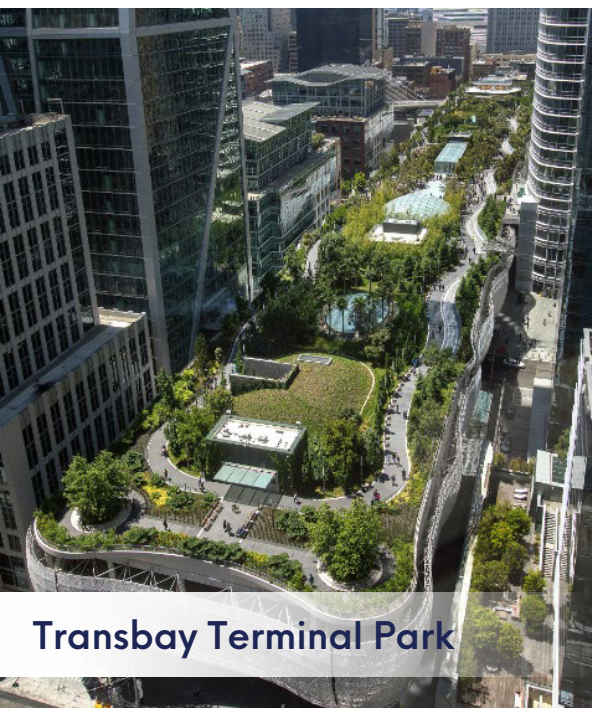


Blue Bottle Caffee

168



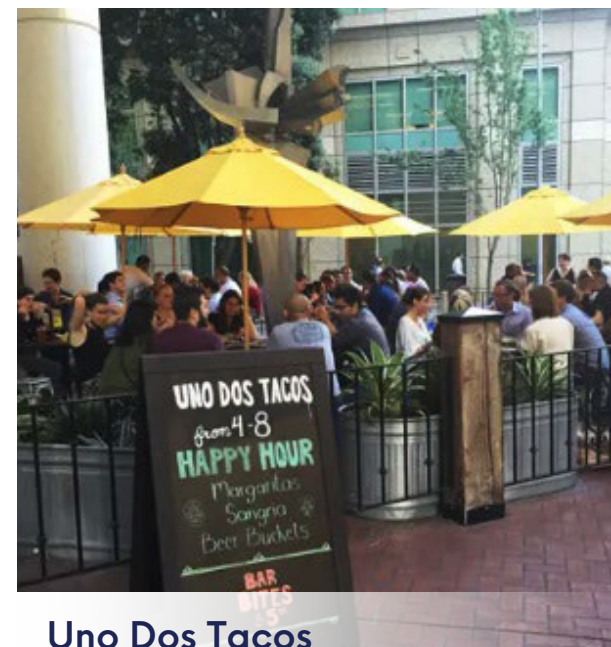
Sweetgreen Restaurant



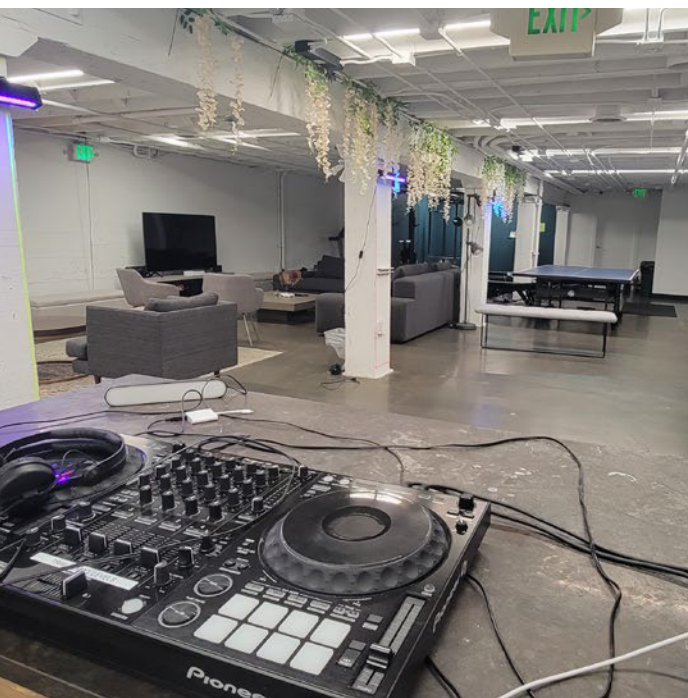
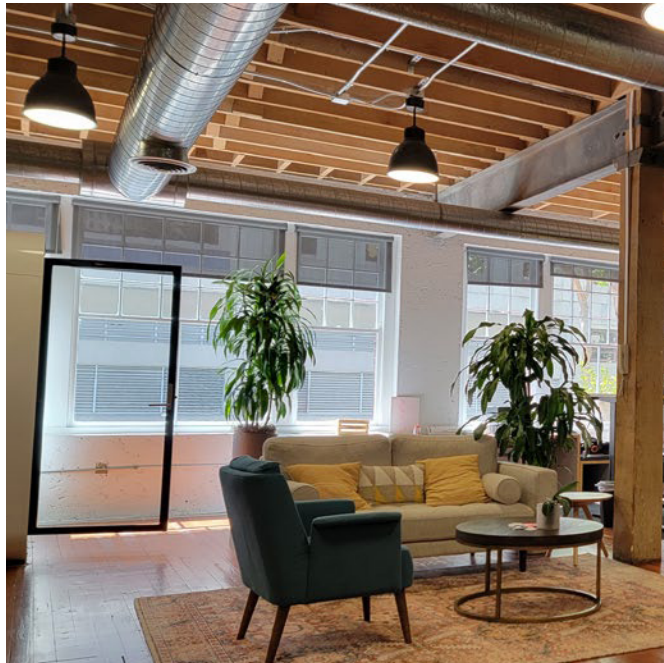
Transbay Terminal Park



Southside Spirit House



Uno Dos Tacos





INNOVATION  
PROPERTIES  
GROUP

# 576 Folsom St

San Francisco East Cut

## For leasing information

### Innovation Properties Group

181 2nd Street, San Francisco, CA

[www.ipgsf.com](http://www.ipgsf.com) | CL 02031924

### Charlie Cutler | Senior Vice President

(415) 850-4935 | [charlie@ipgsf.com](mailto:charlie@ipgsf.com)

BRE : 02026787

### Chris Baker | First Vice President

(650) 315 9858 | [chris@ipgsf.com](mailto:chris@ipgsf.com)

BRE : 02116566

[ipgsf.com](http://ipgsf.com)

This document has been prepared by IPG for advertising and general information only. IPG makes no guarantees, representations or warranties of any kind, expressed or implied, regarding the information including, but not limited to, warranties of content, accuracy and reliability. Any interested party should undertake their own inquiries as to the accuracy of the information. IPG excludes unequivocally all inferred or implied terms, conditions and warranties arising out of this document and excludes all liability for loss and damages arising there from. This publication is the copyrighted property of IPG and/or its licensor(s). ©2023. All rights reserved.